

Bass Trombone

# ANTÍFONA

*A ti, ó Deus, fiel e bom Senhor.  
Eterno Pai, Supremo benfeitor.*

EVENTIDE

William Henry Monk (1823-1889)

Henry Maxwell Wright (1849-1931)

Arr: Willames S. da Costa

Andante  $\text{♩} = 96$

13

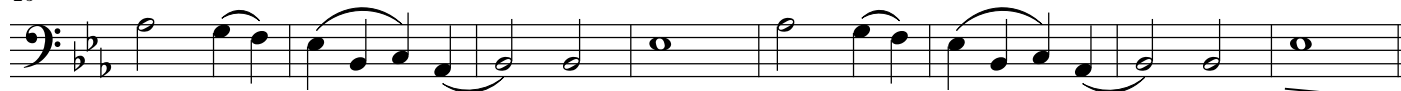
A



19



26



B

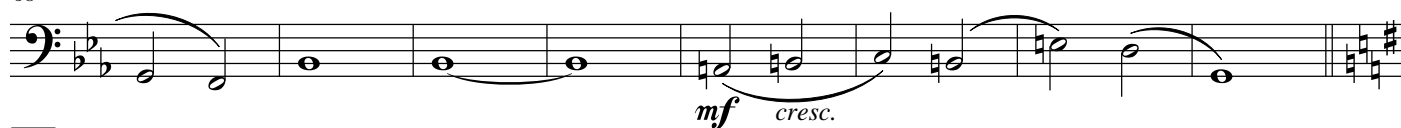
20

C

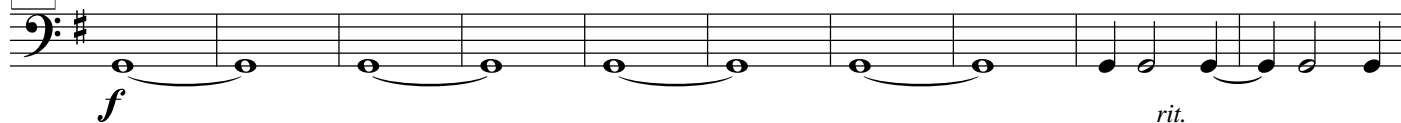
8



68



D



86



92

E

a tempo



97



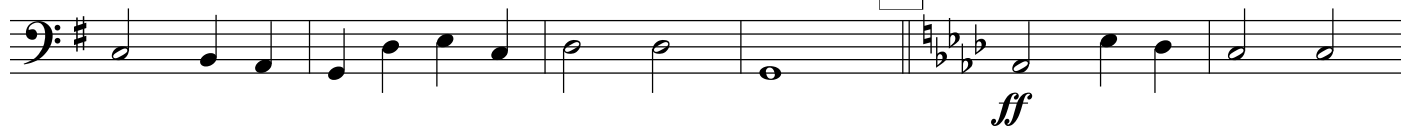
103



Maestoso

110

F



[illegible][illegible]

The bass line of 'The Rose Tree' is written on a single staff with a bass clef and a key signature of three flats (B-flat, E-flat, A-flat). The melody consists of a series of eighth and sixteenth notes, with some triplets indicated by a '3' over the notes. The piece ends with a double bar line.

TB.BASS-PG2